

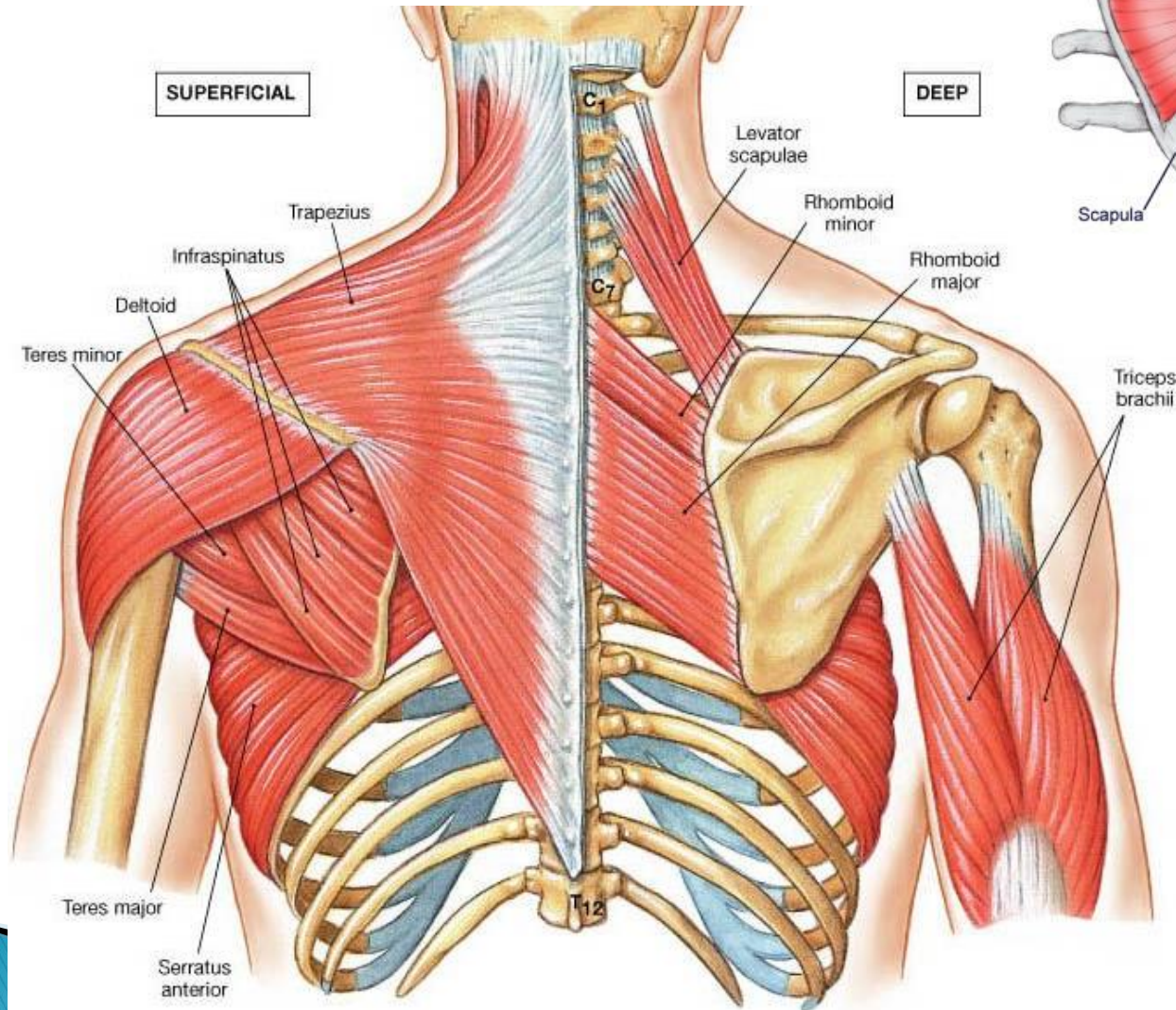


Scapulothoracic arthroscopy, indications and technique

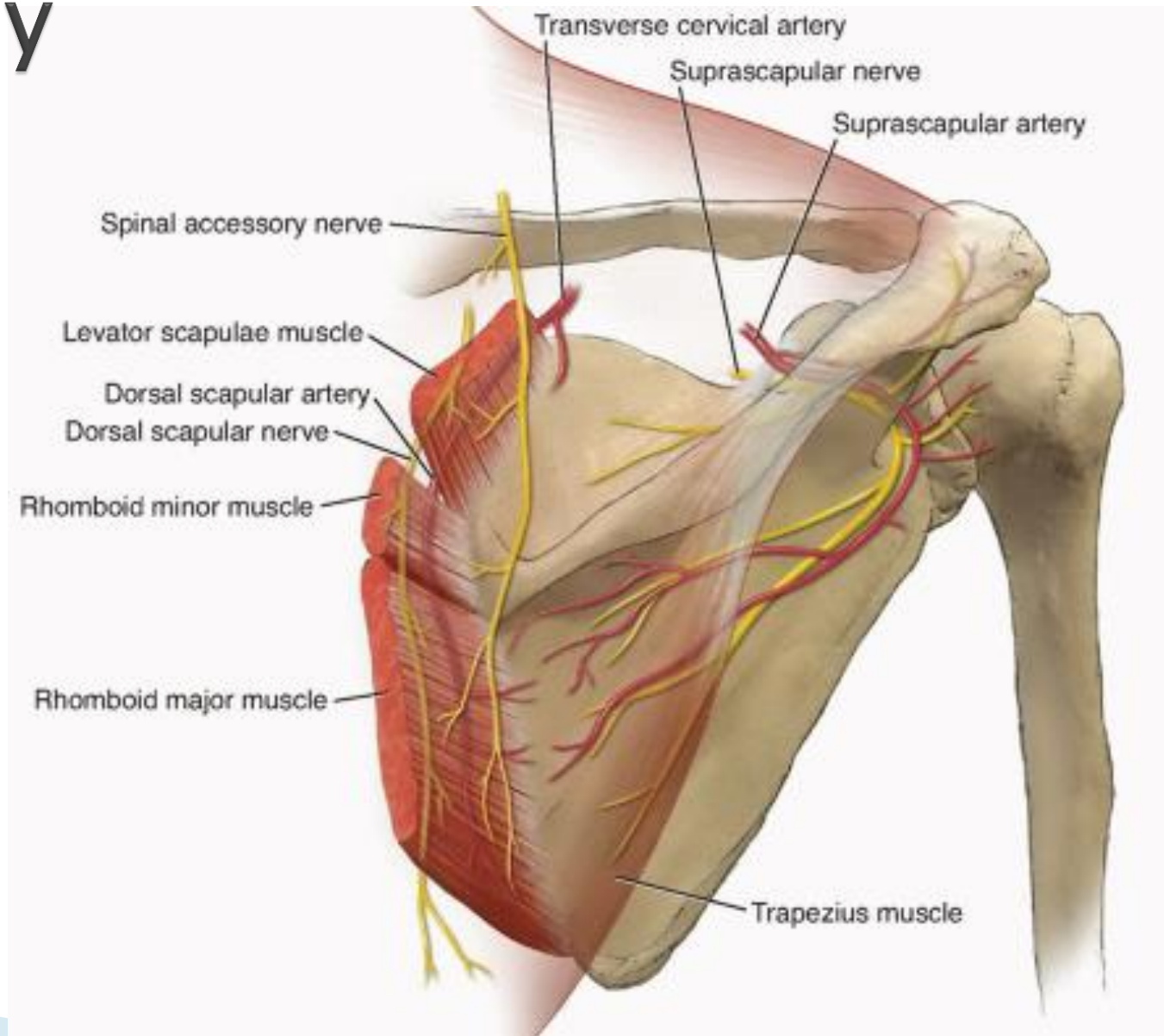
M.N. Naderi, MD

Fellowship in shoulder surgery
& arthroscopy

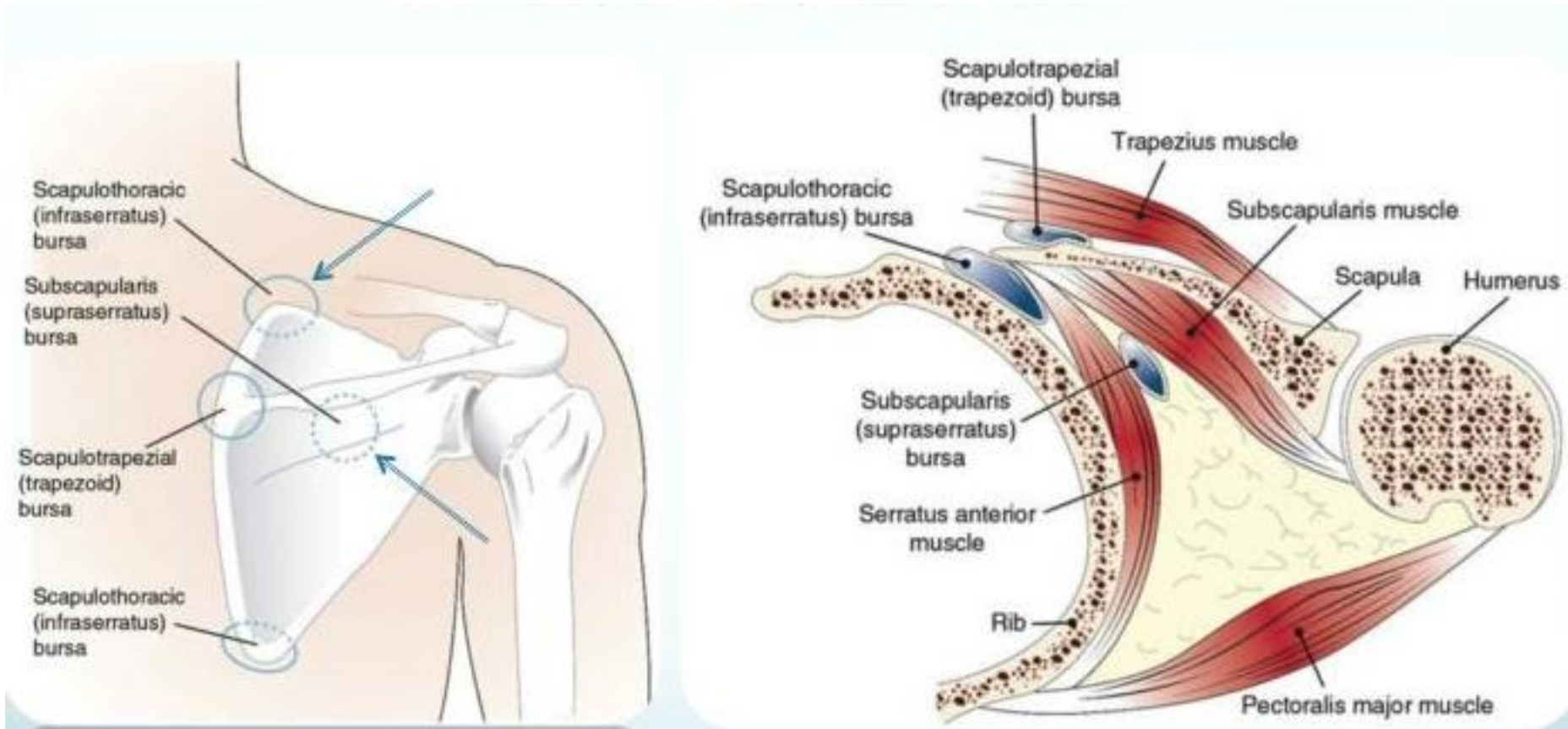
Anatomy



Anatomy

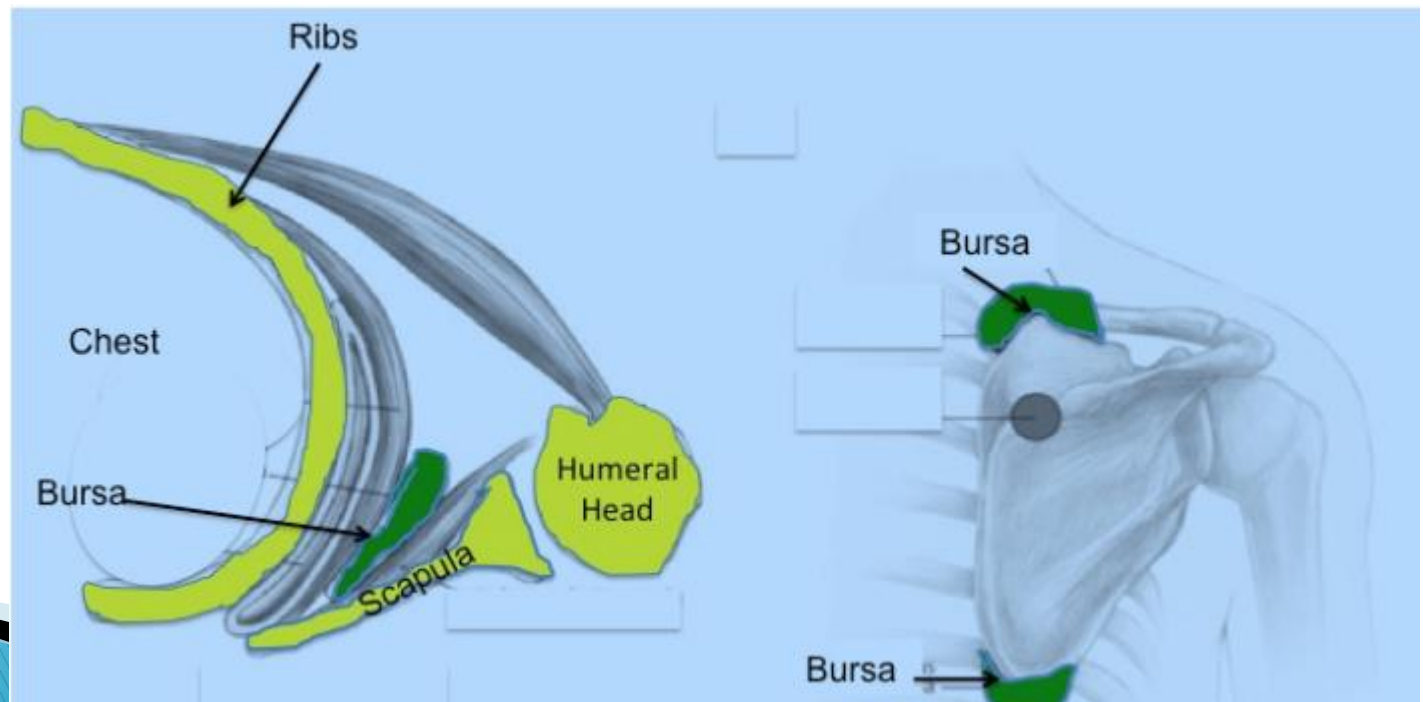


Anatomy



Indications

- ▶ resistant cases of bursitis of scapula
- ▶ resistant cases snapping of scapula
- ▶ rare cases of excess bone in anterior of scapula



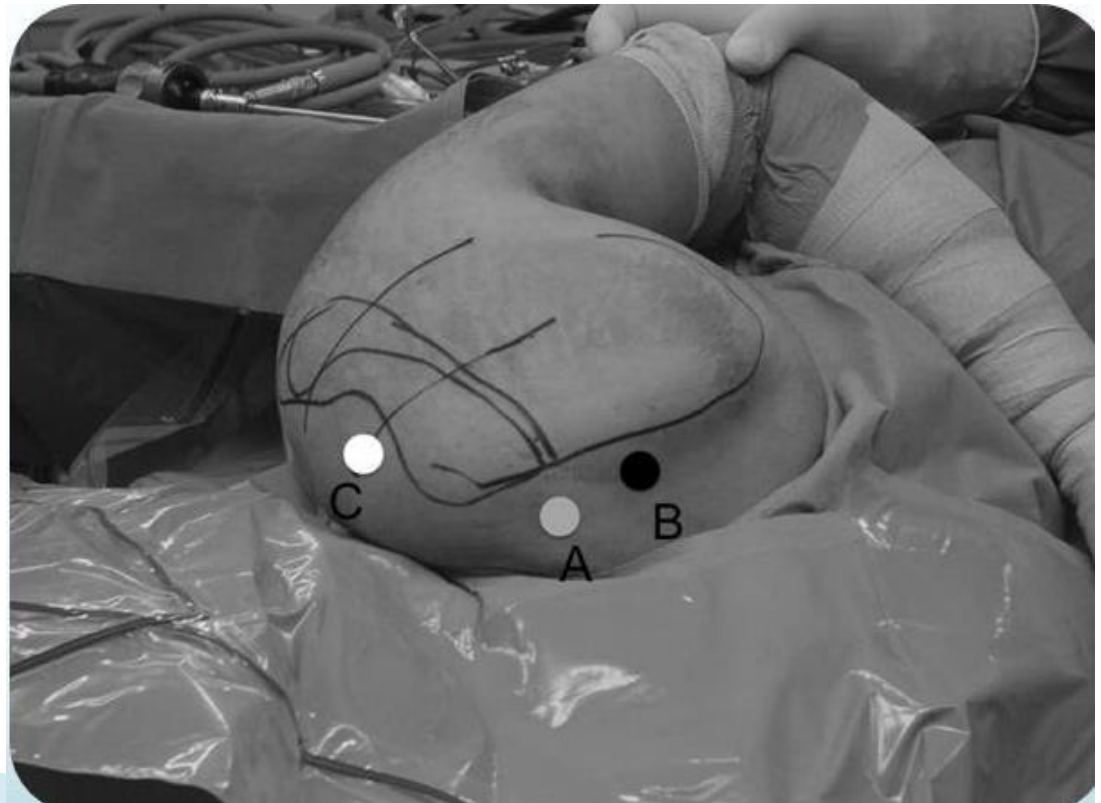
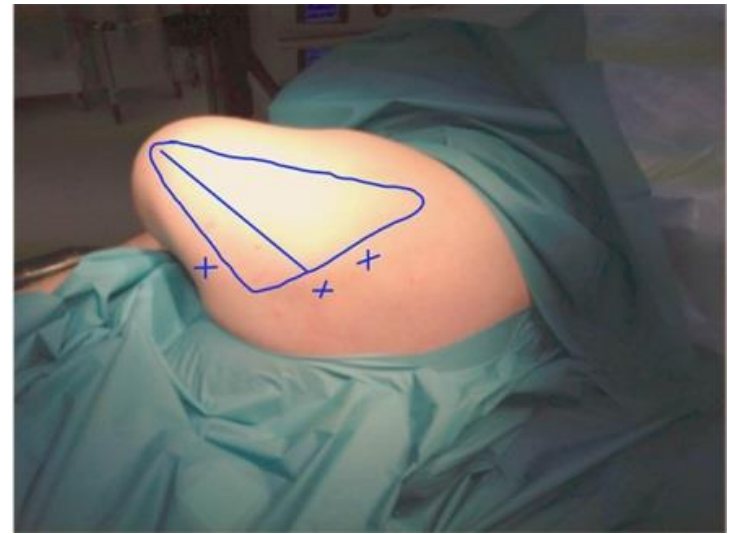
Technique

- ▶ Position
 - prone or lateral



Technique

- ▶ portals
 - Superomedial
 - Inferomedial
 - superior



Technique

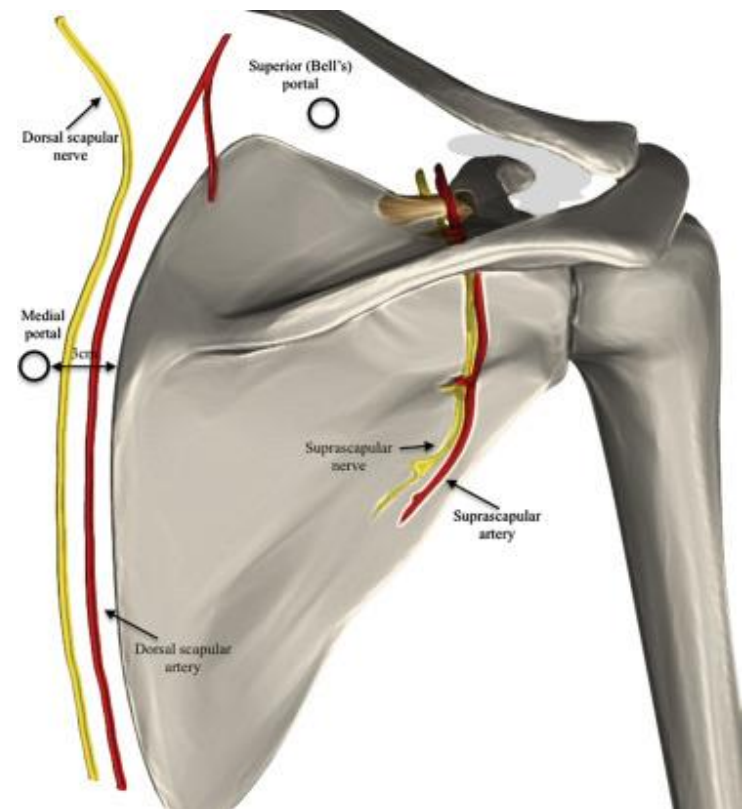
- ▶ scope is placed in medial portal
- ▶ superior portal the shaver enters



Technique

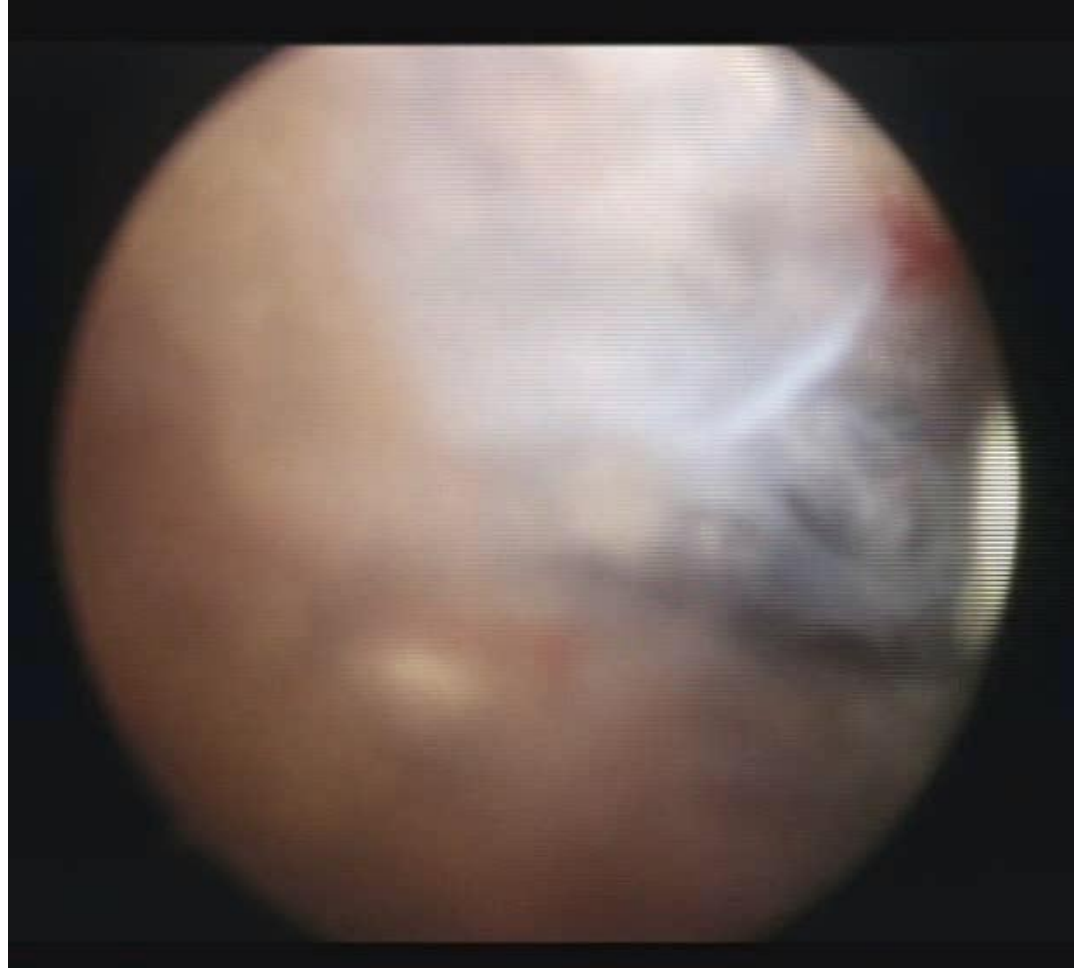
► Complication

- iatrogenic injury to nearby N/V structures (dorsal scapula nerve & artery)
- fluid extravasation



Our experience

- ▶ limited to 3 cases
- ▶ results was good



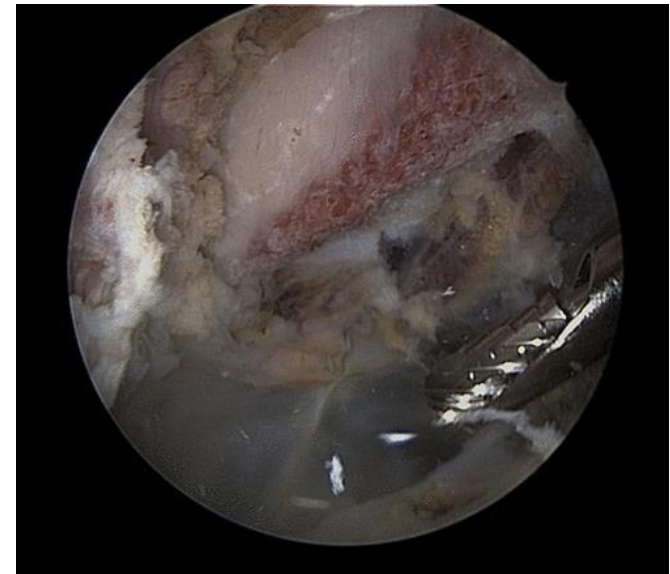
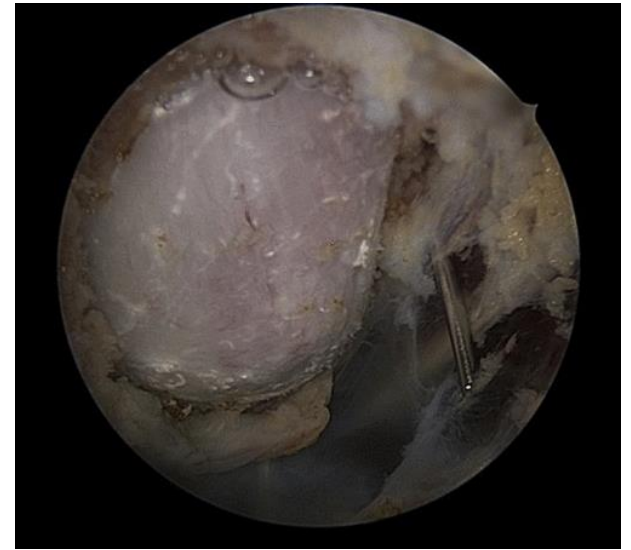
Summary

▶ Scapulothoracic arthroscopy

- Less invasive
- Faster recovery rates
- Better cosmetic appearance

Notice :

- Choose right indications
- Careful of potential complications



Thank you for your attention